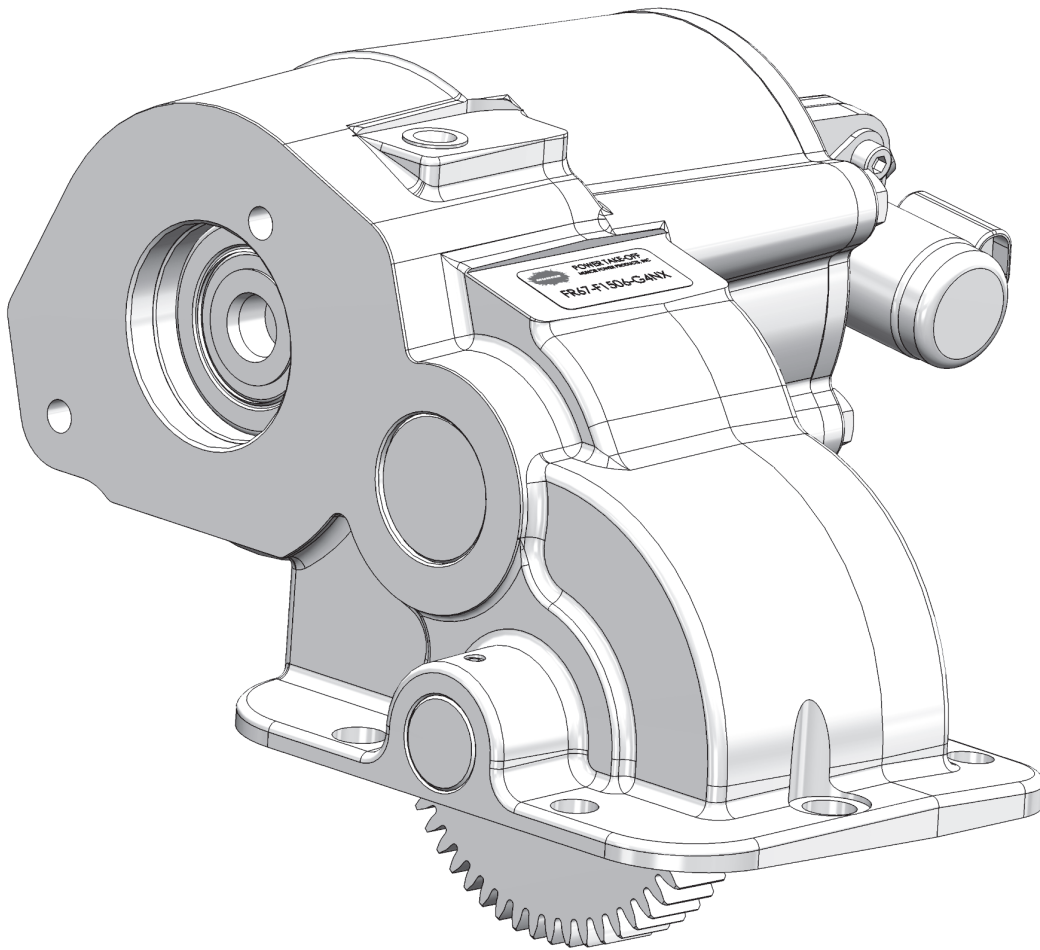


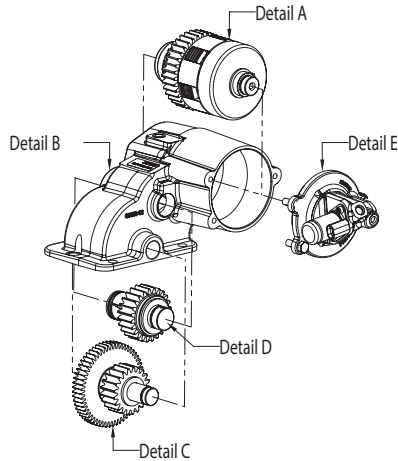


FR63/64/67 SERIES PTO

PARTS LIST AND SERVICE MANUAL

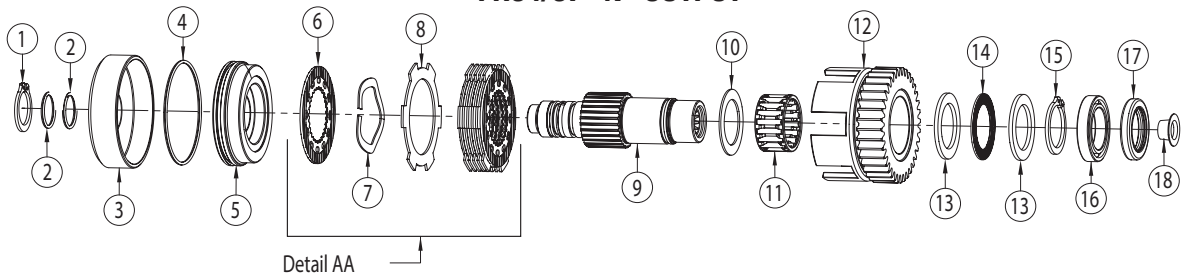


FR63/64/67 PTO EXPLODED VIEWS



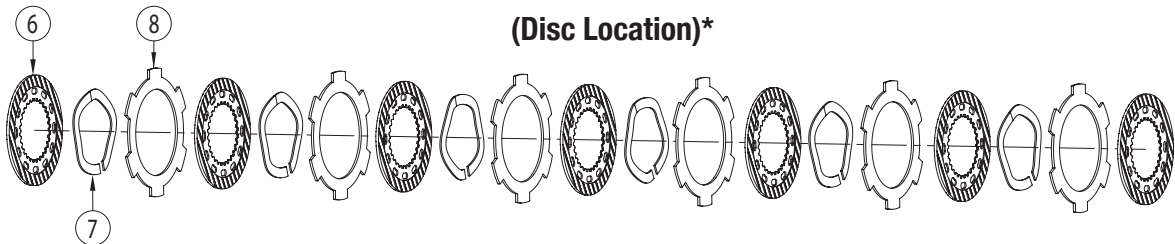
DETAIL A – OUTPUT SHAFT

FR64/67 “N” OUTPUT



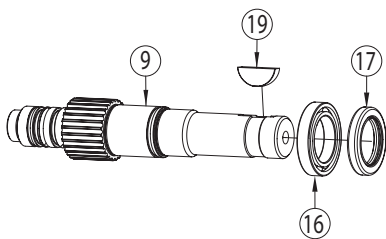
DETAIL AA – CLUTCH PACK ASSEMBLY

(Disc Location)*

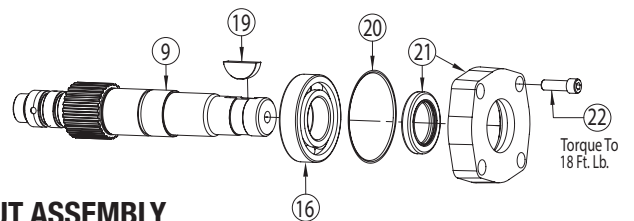


*The clutch pack assembly contains a spring and a spacer disc in between each friction disc. The assembly should begin and end with a friction disc.

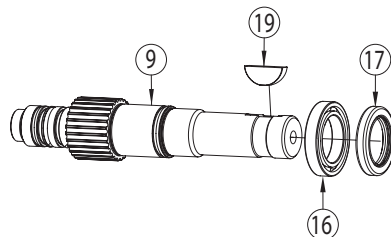
FR64/ 6 7 “B” OUTPUT ASSEMBLY



FR63 “B” OUTPUT ASSEMBLY

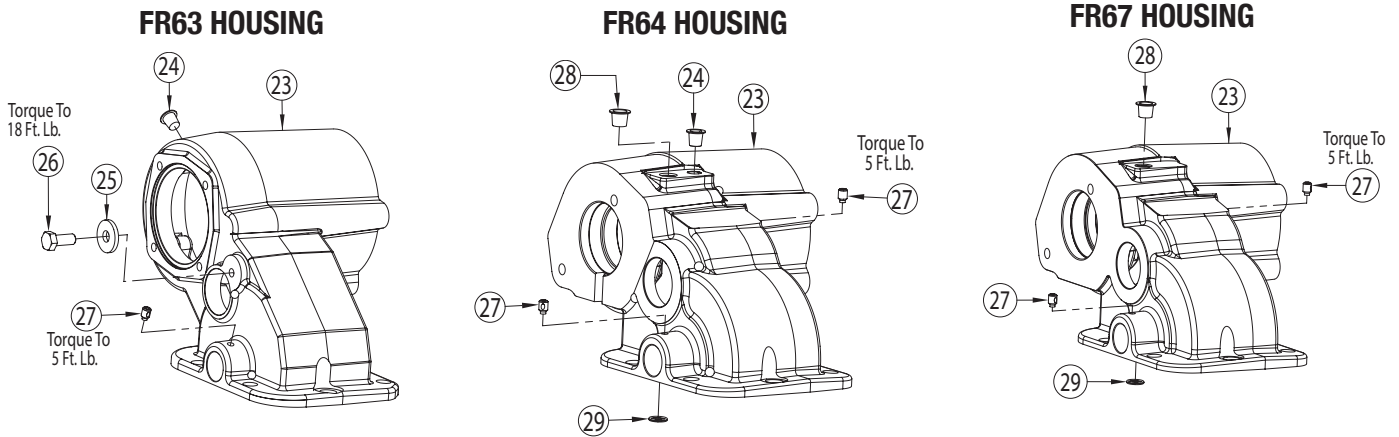


FR63 “Q”, “R” & “T” OUTPUT ASSEMBLY

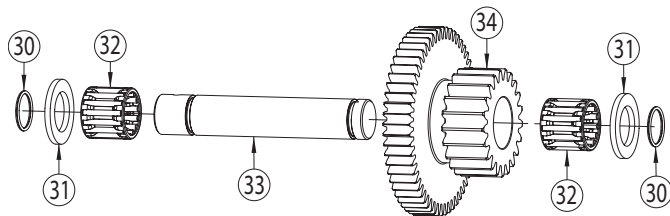


FR63/64/67 PTO EXPLODED VIEWS

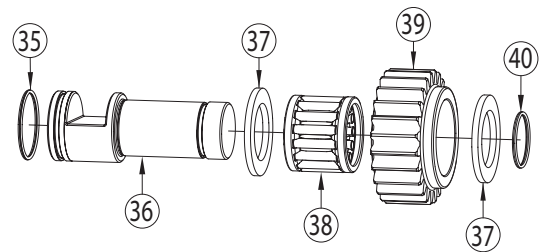
DETAIL B – PTO HOUSING



DETAIL C – INPUT SHAFT



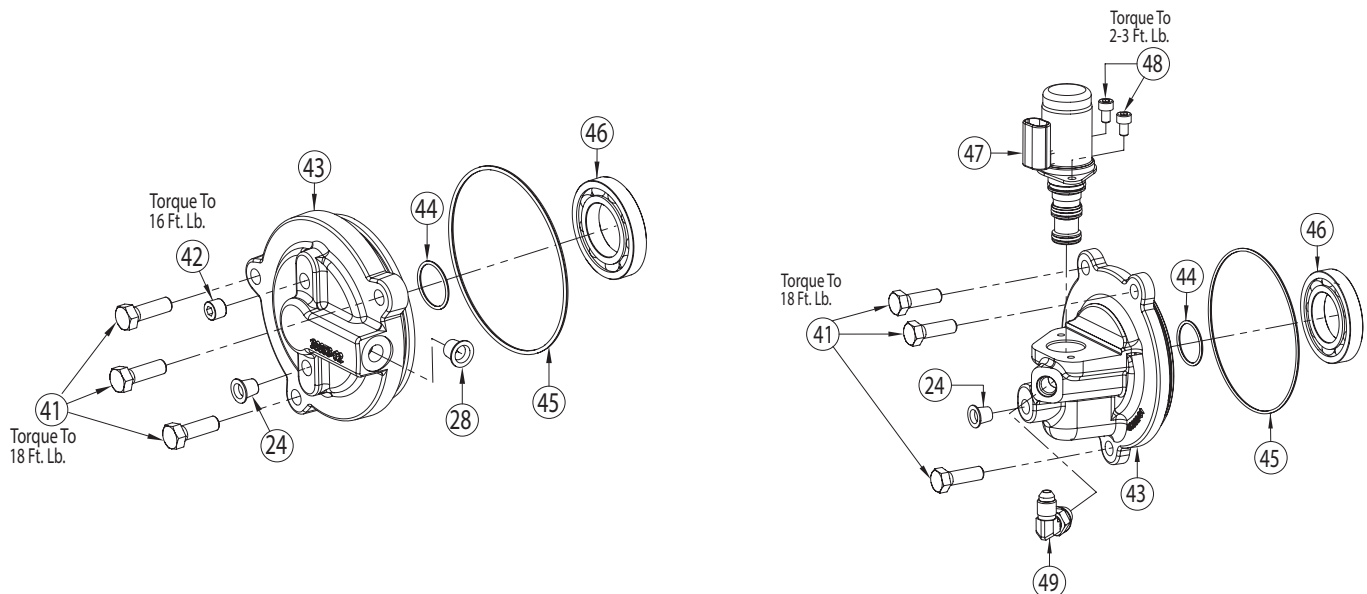
DETAIL D – REVERSE SHAFT



DETAIL E – BEARING

FR63/64 BEARING COVER

FR67 BEARING COVER



PARTS LIST & DESCRIPTION

| ITEM | QTY | PART NO | DESCRIPTION |
|-----------------|-----|-------------|--|
| Detail A | | | |
| 01 | 1 | 24T39182 | Snap Ring |
| 02 | 2 | 12T39023 | O-Ring |
| 03 | 1 | 49T39022 | Piston Cup |
| 04 | 1 | 12T36540 | O-Ring |
| 05 | 1 | 49T38881 | Piston |
| 06 | 7 | 49T36259 | Friction Disc |
| 07 | 6 | 27T36286 | Spring |
| 08 | 7 | 49T36258 | Spacer Disc |
| 09 | 1 | See Table A | Output Shaft |
| 10 | 1 | 27T37085 | Washer |
| 11 | 1 | 10T37008 | Needle Bearing |
| 12 | 1 | 02T39074 | Output Gear |
| 13 | 2 | 21T29017 | Washer |
| 14 | 1 | 10T37009 | Bearing |
| 15 | 1 | 24T35480 | Snap Ring |
| 16 | 1 | 10T21017 | Bearing (FR63) |
| | 1 | 10T39147 | Bearing (FR64/67) |
| 17 | 1 | 11T37790 | Shaft Seal (FR64/67) |
| 18 | 1 | 25T37387 | Cap Plug ("Q", "N" & "T") |
| | 1 | 25T35520 | Cap Plug ("R") |
| N.S. | 1 | 43TK5170 | FR63 "D"/"G" Installation Kit (12V) Includes: Shift Kit |
| N.S. | 1 | 43TK4521 | FR63/64 "H"/"Q - FR63 Only" Installation Kit (12V) Includes: Shift Kit |
| N.S. | 1 | 43TK4825 | FR63/64 "I" Installation Kit (12V) Includes: Shift Kit |
| N.S. | 1 | 43TK4524 | FR63/64 "Z" Installation Kit (12V) Includes: Shift Kit |
| N.S. | 1 | 43TK5171 | FR64 "D"/"G" Installation Kit (12V) Includes: Shift Kit |
| N.S. | 1 | 43TK4593 | FR64 "Q" Installation Kit (12V) Includes: Shift Kit |

| ITEM | QTY | PART NO | DESCRIPTION |
|-----------------|-----|----------|--|
| N.S. | 1 | 43TK5181 | FR67 "D" Installation Kit (12V) Includes: Shift Kit, Instruction Packet & Stud Kit |
| N.S. | 1 | 43TK5183 | FR67 "G" Installation Kit (12V) Includes: Shift Kit, Instruction Packet & Stud Kit |
| N.S. | 1 | 43TK5187 | FR67 "Z" Installation Kit (12V) Includes: Shift Kit, Instruction Packet & Stud Kit |
| N.S. | 1 | 43TK5206 | FR67 "H" Installation Kit (12V) Includes: Shift Kit, Instruction Packet & Stud Kit |
| Detail C | | | |
| 30 | 2 | 12T36879 | O-Ring |
| 31 | 2 | 21T38956 | Washer |
| 32 | 2 | 10T34006 | Bearing |
| 33 | 1 | 07T38865 | Input Shaft |
| 34 | 1 | 03T39073 | Input Gear |
| Detail D | | | |
| 35 | 1 | 12T36456 | O-Ring |
| 36 | 1 | 08T39258 | Reverse Idler Shaft (FR63) |
| | 1 | 08T39075 | Reverse Idler Shaft (FR64/67) |
| 37 | 2 | 21T39144 | Washer |
| 38 | 1 | 10T39145 | Needle Bearing |
| 39 | 1 | 04T39180 | Reverse Idler Gear |
| 40 | 1 | 12T35577 | O-Ring |
| Detail E | | | |
| 41 | 3 | 19T32740 | Hex Capscrew |
| 42 | 1 | 25T21684 | Plug |
| 43 | 1 | 15T39263 | Bearing Cover (FR63) |
| | 1 | 15T39070 | Bearing Cover (FR64) |

TABLES A, B & MODEL NUMBER CONSTRUCTION

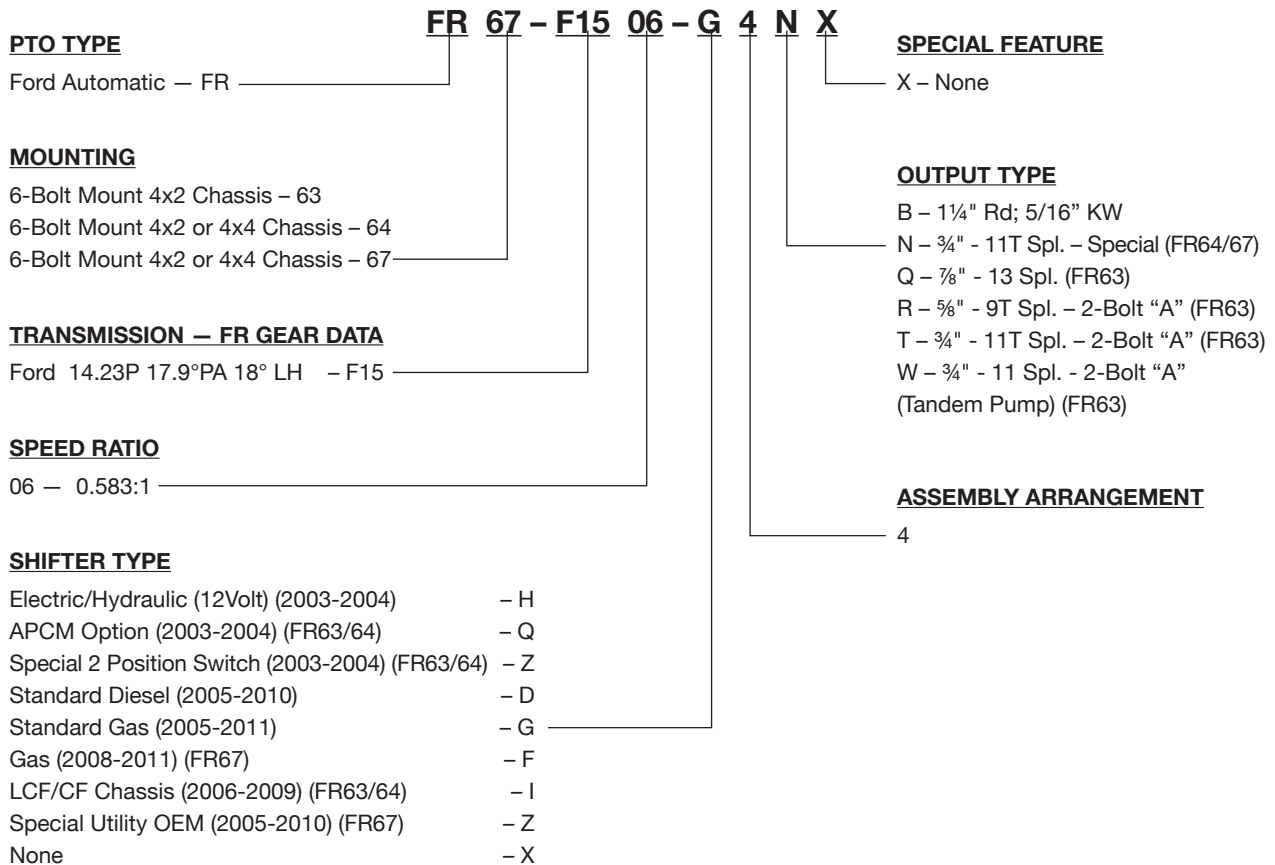
Table A – Output Shaft (Item 9)

| PART NO | DESCRIPTION |
|----------|--------------------------------------|
| 06T39386 | Output Shaft “B” 1.3" Rd. (FR63) |
| 06T39197 | Output Shaft “B” 1.3" Rd. (FR64) |
| 06T41494 | Output Shaft “B” 1.3" Rd. (FR67) |
| 06T39184 | Output Shaft “N” ¾" – 11T SPL (FR64) |

Table B – Output Cover/Flange (Item 21)

| PART NO | DESCRIPTION | COMPONENTS |
|----------|--|---|
| 14TA5160 | “B” Flange/Seal Assembly (FR63) | Includes: 14T37344 Hydraulic Adapter & 11T37790 Output Shaft Seal |
| 14TA3997 | “Q”, “R” & “T” Flange/Seal Assembly (FR63) | Includes: 14T39141 Hydraulic Flange & 11T37790 Output Shaft Seal |

MODEL NUMBER CONSTRUCTION

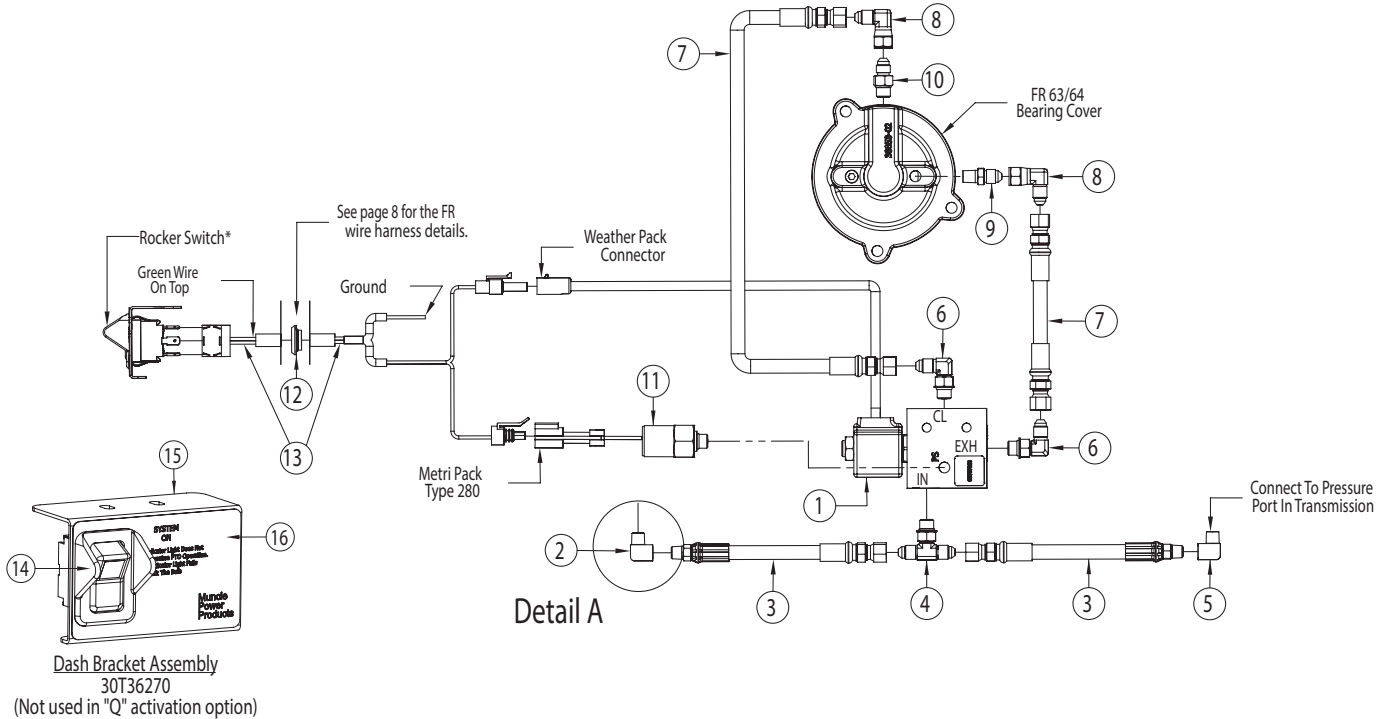


ACTIVATION KITS

FR 63/64

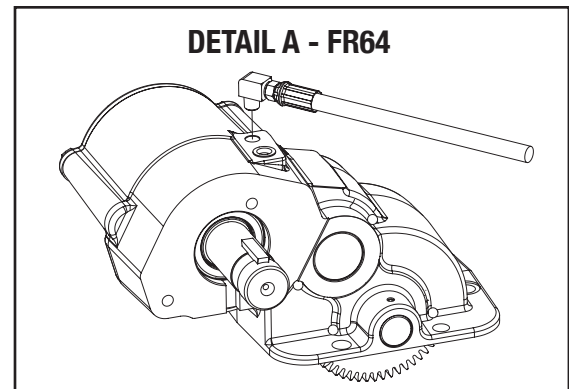
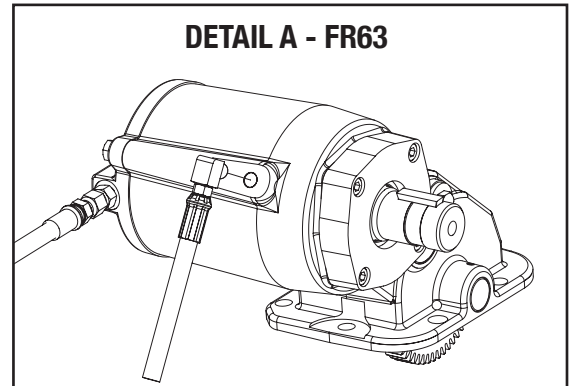
43TK5170 - FR63 "D" & "G" Activation Kit
 43TK5171 - FR64 "D" & "G" Activation Kit
 43TK4521 - FR63/64 "H" Activation Kit
 43TK4524 -FR63/64 "Z" Activation Kit

43TK4521 - FR63 "Q" Activation Kit
 43TK4593 - FR64 "Q" Activation Kit
 43TK4825 - FR63/64 "I" Activation Kit



*Green light in the rocker switch is to turn "ON" when the PTO is engaged and turn "OFF" when the PTO is disengaged.

| ITEM | QTY | PART NO. | DESCRIPTION |
|------|-----|----------|---|
| 1 | 1 | 35T37928 | Valve 12V DC |
| 2 | 1 | 43T37385 | Orifice Elbow (Silver Color) |
| 3 | 2 | 45M4R528 | 28" Hose Assembly (NPT-JIC) |
| 4 | 1 | 43T36231 | Tee Fitting |
| 5 | 1 | 44MB0222 | NPT Elbow |
| 6 | 2 | 43M68014 | 90° JIC Fitting |
| 7 | 2 | 45T36274 | 28" Hose Assembly (JIC-JIC) |
| 8 | 2 | 43T36445 | JIC Elbow |
| 9 | 1 | 43T37503 | JIC Adapter |
| 10 | 1 | 43T36431 | ODT/JIC Adapter |
| 11 | 1 | 30T37954 | Pressure Switch |
| 12 | 1 | 37T35674 | Rubber Grommet |
| 13 | 1 | 34T39852 | "D" Shift Option Wiring Harness |
| | | 34T39851 | "G" Shift Option Wiring Harness |
| | | 34T39032 | "H" Shift Option Wiring Harness*** |
| | | 34T40128 | "I" Shift Option Wiring Harness |
| | | 34T39599 | "Q" Shift Option Wiring Harness |
| | | 34T39185 | "Z" Shift Option Wiring Harness |
| 14 | 1 | 19T36623 | 12V Rocker Switch ("D", "G" & "Z" Option) |
| | | 22T35140 | 12V Rocker Switch ("H" Option) |
| | | 21T37991 | 12V Rocker Switch ("I" Option) |
| 15 | 1 | 36MA1005 | Switch Bracket |
| 16 | 1 | 36T36271 | Face Plate |
| N.S. | 2 | 19T36623 | Capscrew (Solenoid Mtng.) |
| N.S. | 2 | 21T37991 | Lock Washer (Solenoid Mtng.) |
| N.S. | 2 | 22T35140 | Nut (Solenoid Mtng.) |
| N.S. | 6 | 28T35542 | Cable Ties |
| N.S. | 1 | 36MK1007 | Dash Bracket Bolt Kit |



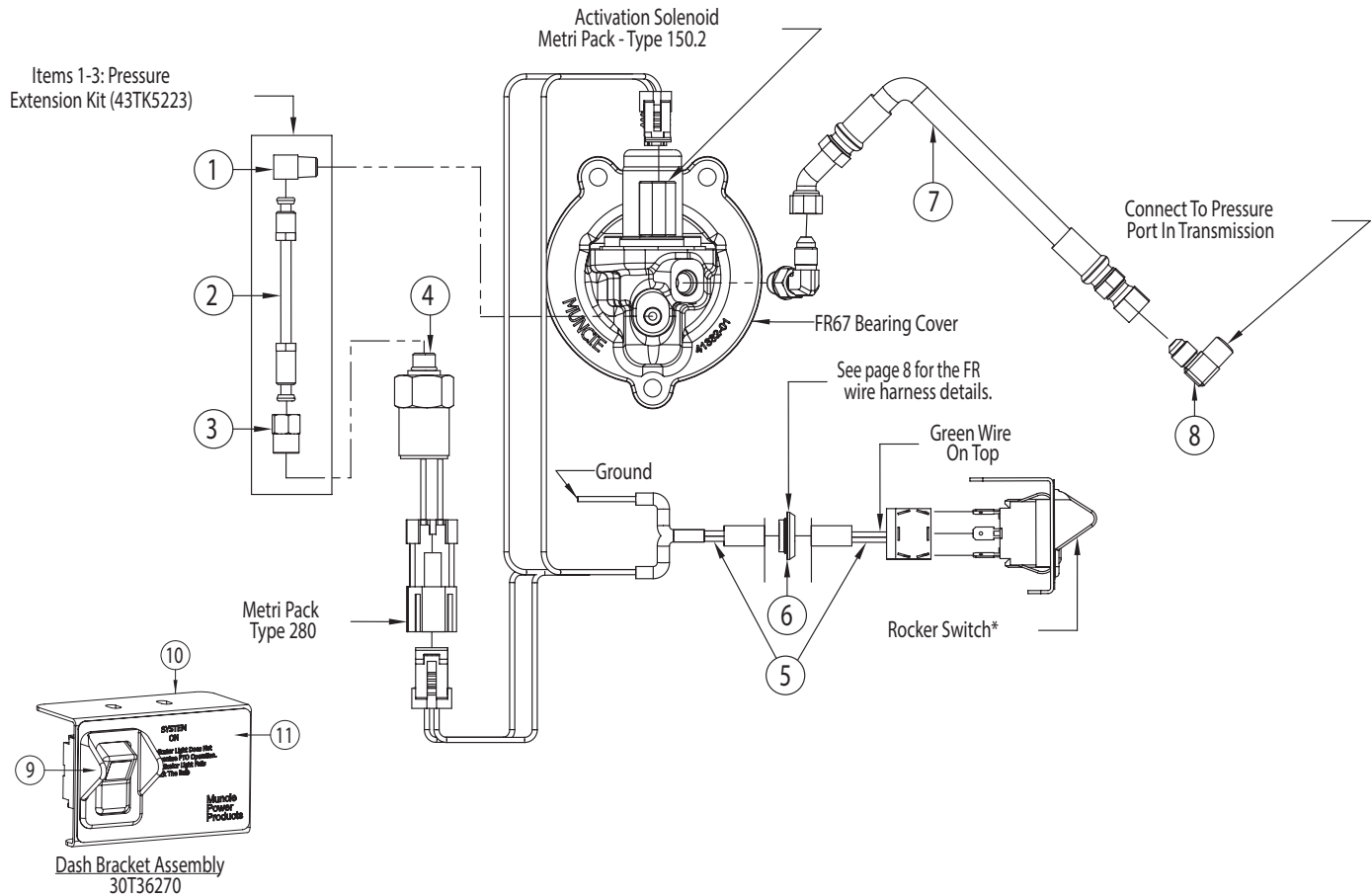
**Relay included with harness (p/n 37T37621)

ACTIVATION KITS

FR 67

43TK5181 – FR67 “D” Installation Kit
 43TK5262 – FR67 “F” Installation Kit
 43TK5187 – FR67 “Z” Installation Kit

43TK5183 – FR67 “G” Installation Kit
 43TK5206 – FR67 “H” Installation Kit



*Green light in the rocker switch is to turn “ON” when the PTO is engaged and turn “OFF” when the PTO is disengaged.

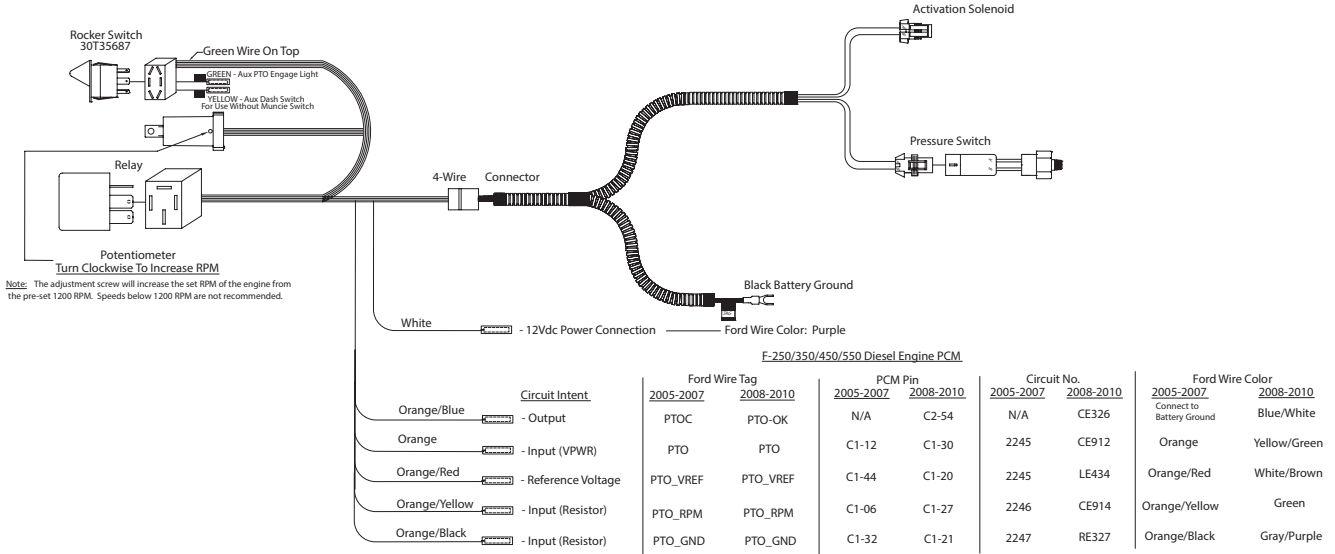
| ITEM | QTY | PART NO. | DESCRIPTION |
|------|-----|----------|--|
| 1 | 1 | 43T37383 | 3/16" Tube Elbow |
| 2 | 1 | 43T37384 | Pressure Tube |
| 3 | 1 | 43T37382 | 3/16" Tube Connector |
| 4 | 1 | 30T37954 | Pressure Switch |
| 5 | 1 | 34T41022 | "D" Shift Option Wiring Harness |
| | | 34T41136 | "G" Shift Option Wiring Harness |
| | | 34T41993 | "F" Shift Option Wiring Harness |
| | | 34T41129 | "H" Shift Option Wiring Harness |
| | | 34T41130 | "Z" Shift Option Wiring Harness |
| 6 | 1 | 37T35674 | Rubber Grommet |
| 7 | 1 | 45T41682 | 28" Hose Assembly (NPT-15° JIC) |
| 8 | 1 | 45T41534 | NPT-JIC Elbow |
| 9 | 1 | 30T37620 | 12V Rocker Switch "D", "G", "F" & "Z" Option |
| | | 30T37620 | 12V Rocker Switch "H" Option |
| 10 | 1 | 36MA1005 | Switch Bracket |
| 11 | 1 | 36T36271 | Face Plate |
| N.S. | 1 | 36MK1007 | Switch Bracket Bolt Kit |
| N.S. | 1 | 20TK5188 | FR67 Stud Kit |
| N.S. | 6 | 28T35442 | Cable Ties |
| N.S. | 1 | 52TK4522 | Label Packet |

FR Series Wiring Harness Options

FR63/64/67 DIESEL "D" WIRING HARNESS: FORD 2005-2010 – DIESEL ENGINE

FR63/64 "D" HARNESS - 34T39852

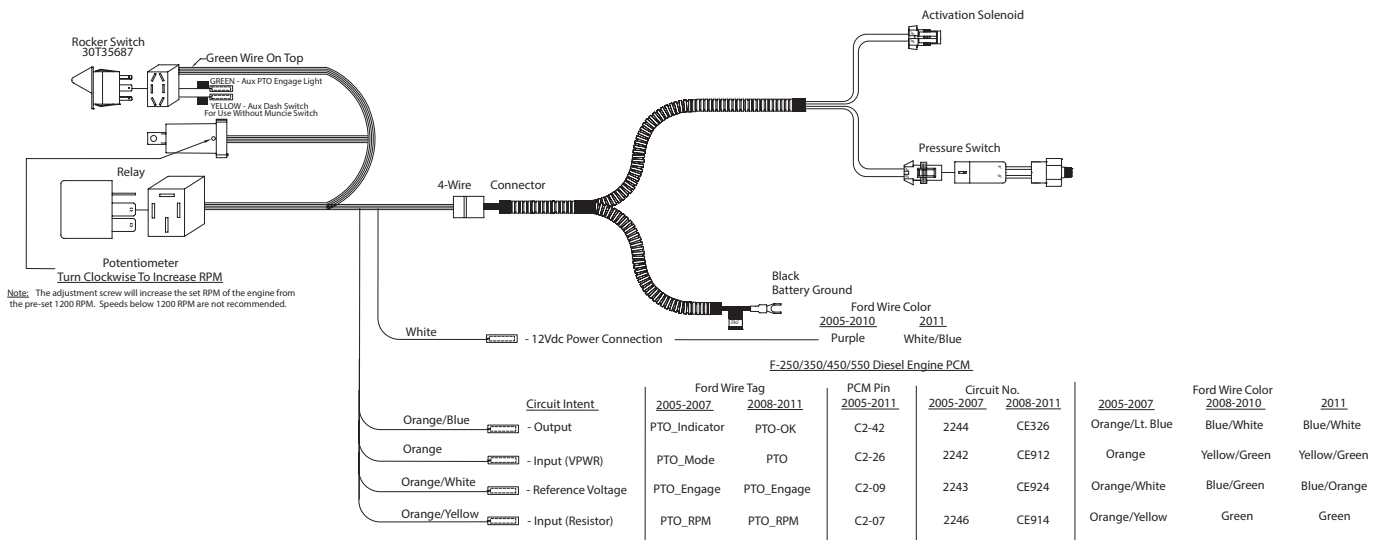
FR67 "D" HARNESS - 34T41022



FR63/64/67 GAS "G" WIRING HARNESS: FORD 2005 & LATER – GAS ENGINE

FR63/64 "G" HARNESS - 34T39851

FR67 "G" HARNESS - 34T41136



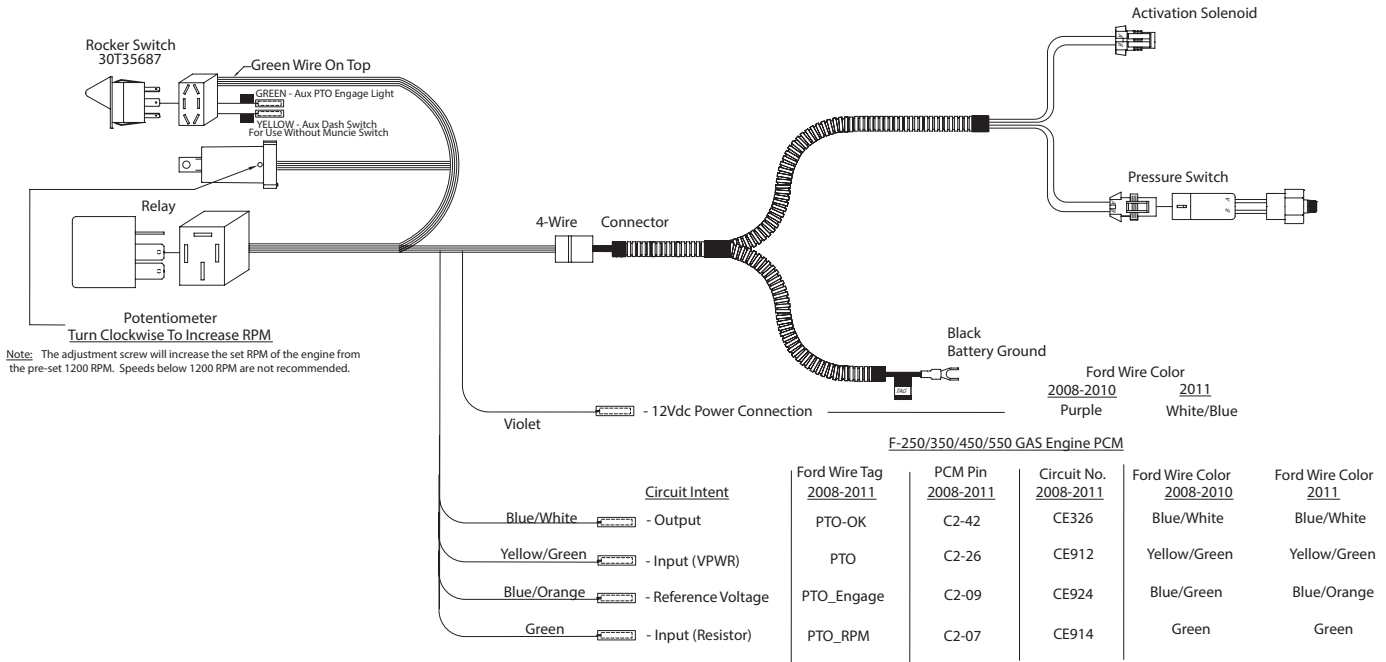
Note: If you do NOT see a Blue/Orange wire in the SEIC bundle, follow the next step very carefully (for the 2011 Ford Gas truck ONLY).

The first production of the Ford 2011 trucks will contain (2) Blue/Gray wires located in the SEIC bundle. One of these wires is for the PTO-Engage; the other is a "PARK" indicator. If your truck contains a Blue/Gray wire for the PTO_Engage wire tag (instead of a Blue/Orange wire), you will need to do a continuity check to ground. Turn the ignition key to "ON" (but do not start the engine), then shift the vehicle out of Park. The wire that changes continuity is for the "Park" indicator and the one that does not change is the wire for the PTO_Engage wire tag. Connect the Muncie Orange/White wire to this Ford Blue/Gray wire, circuit CE924.

FR Series Wiring Harness Options

FR67 GAS "F" WIRING HARNESS: FORD 2008-2011

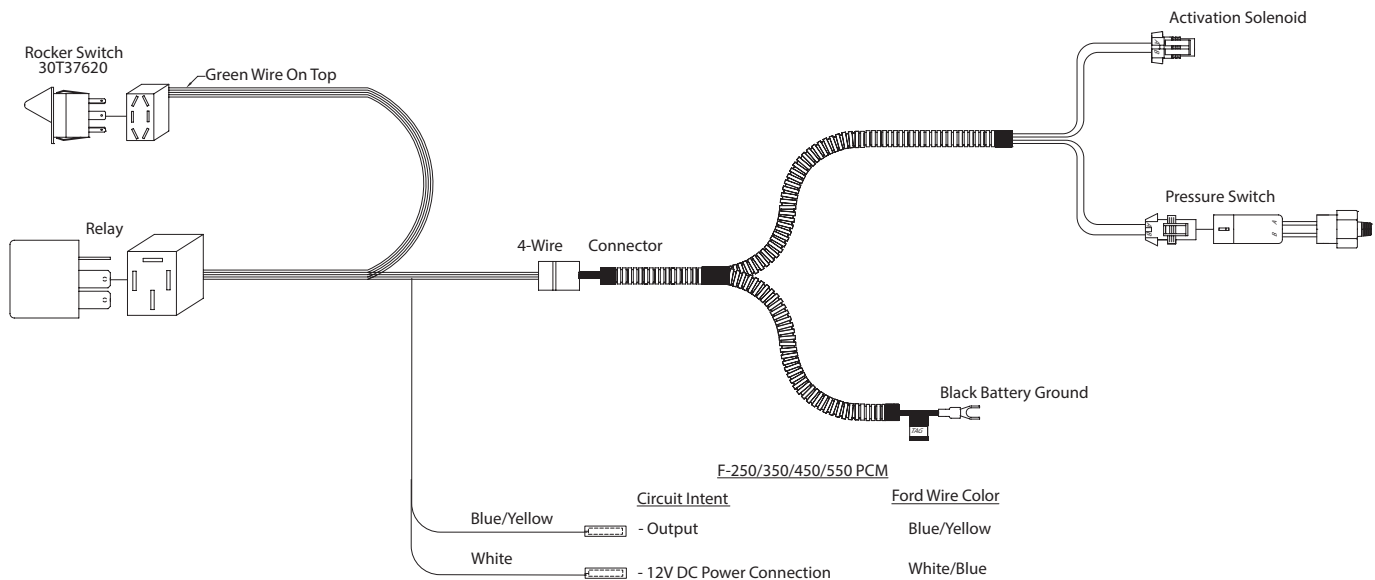
FR67 "F" HARNESS - 34T41993



FR63/64/67 ELECTRIC/HYDRAULIC "H" WIRING HARNESS: FORD 2003-2004

FR63/64 "H" HARNESS (2003-2004) - 34T39032

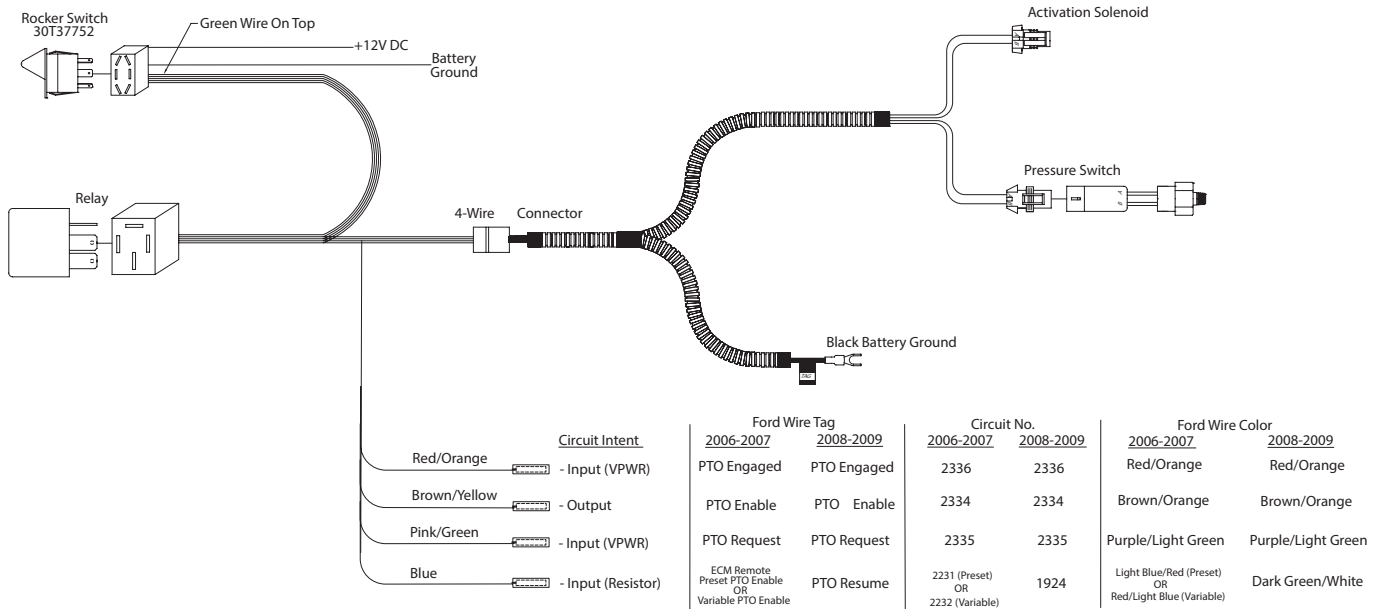
FR67 "H" HARNESS - (2003-2004) - 34T41129



FR Series Wiring Harness Options

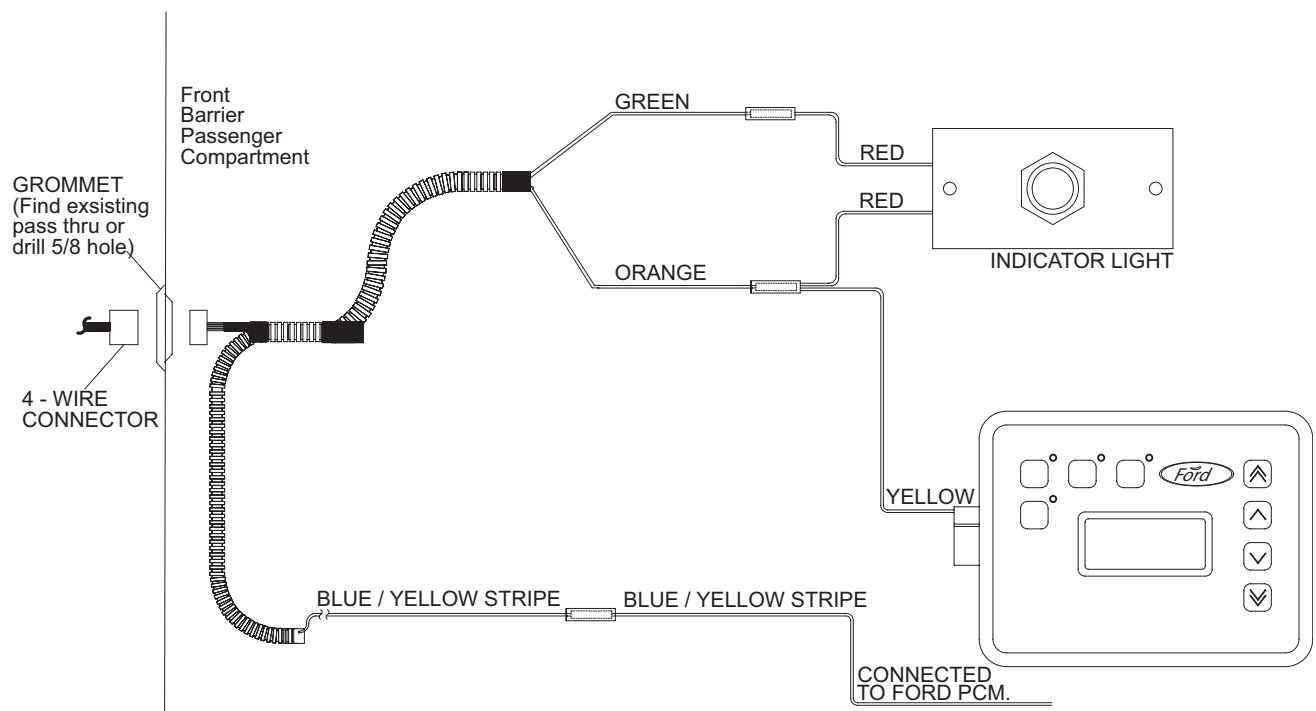
FR63/64 LCF/CF CHASSIS "I" WIRING HARNESS: FORD AUTOMATIC TRANSMISSION 2006-2009

FR63/64 "I" (2006-2009) HARNESS - 34T40128



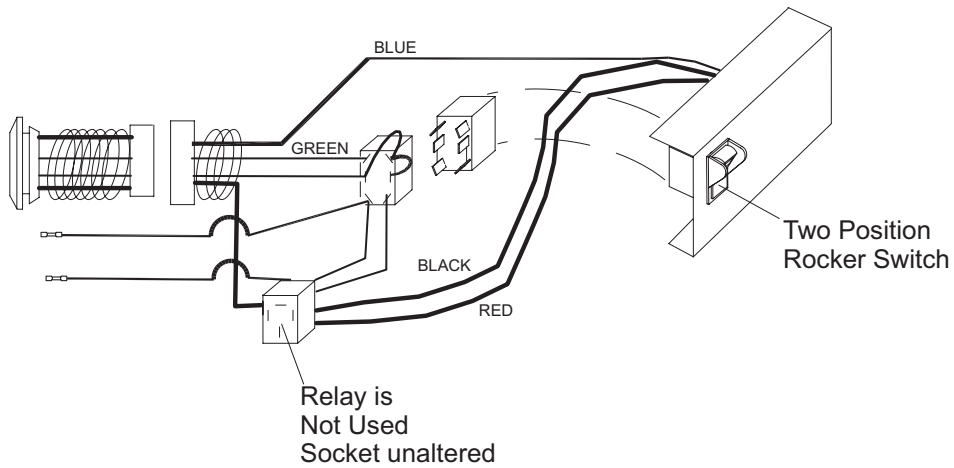
FR63/64 APCM OPTION "Q" WIRING HARNESS – FORD 2003-2004

FR63/64 APCM OPTION "Q" WIRING HARNESS - FORD 2003-2004



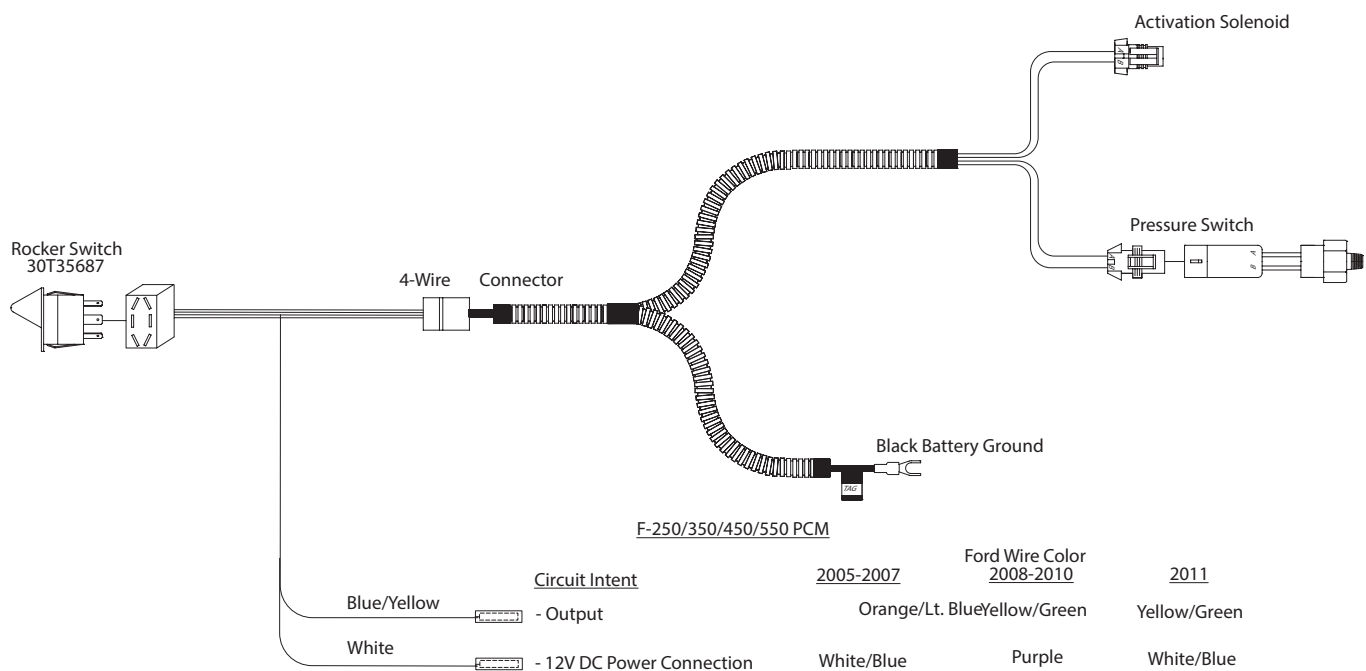
FR Series Wiring Harness Options

FR63/64 SPECIAL 2-POSITION SWITCH "Z" WIRING HARNESS – FORD 2003-2004



FR67 SPECIAL UTILITY OEM "Z" WIRING HARNESS – FORD 2005 & LATER

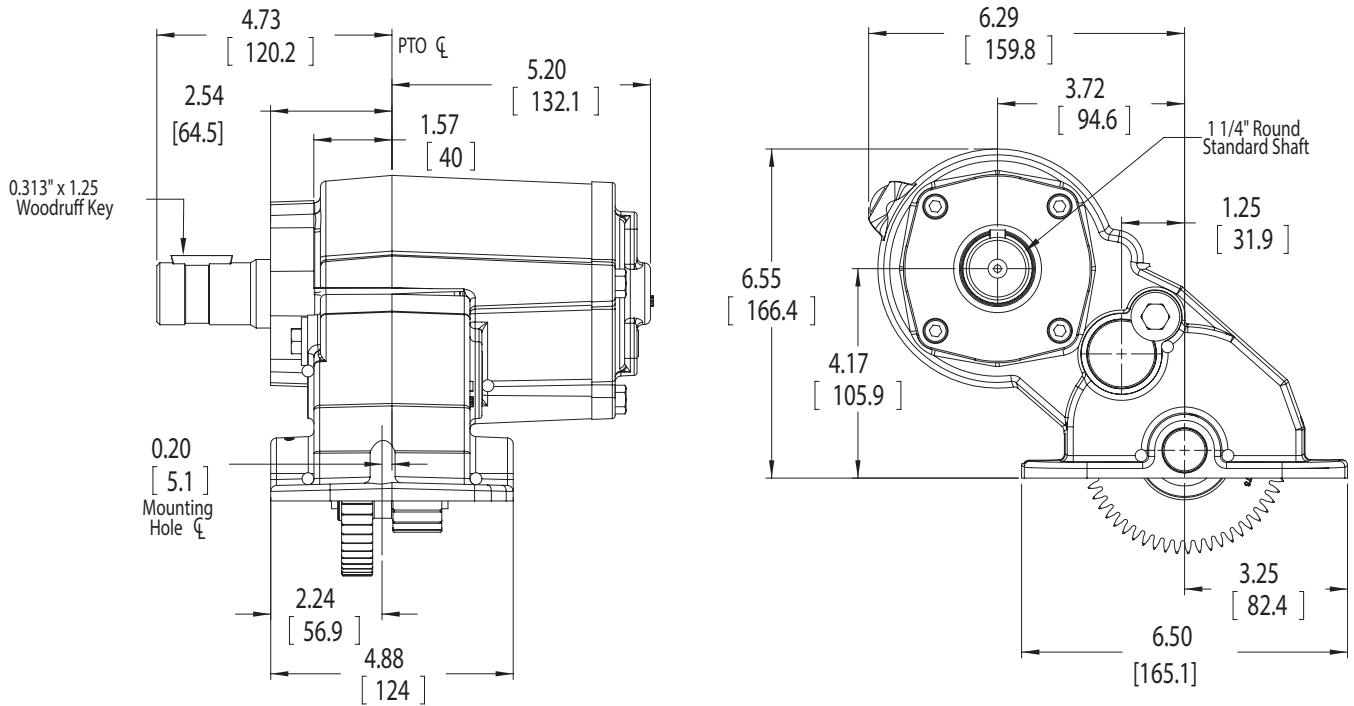
FR67 "Z" HARNESS - 34T41130



DIMENSIONS

FR63

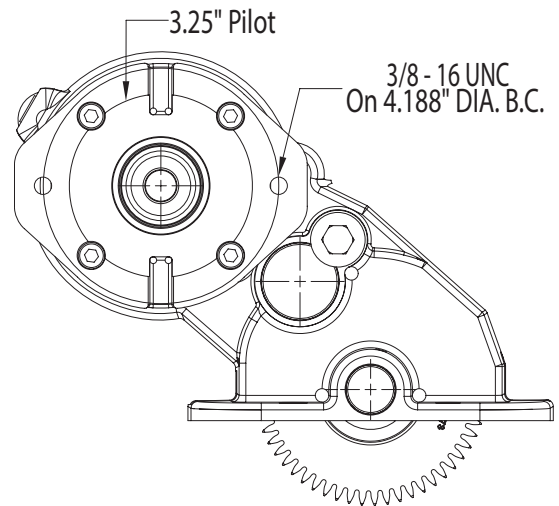
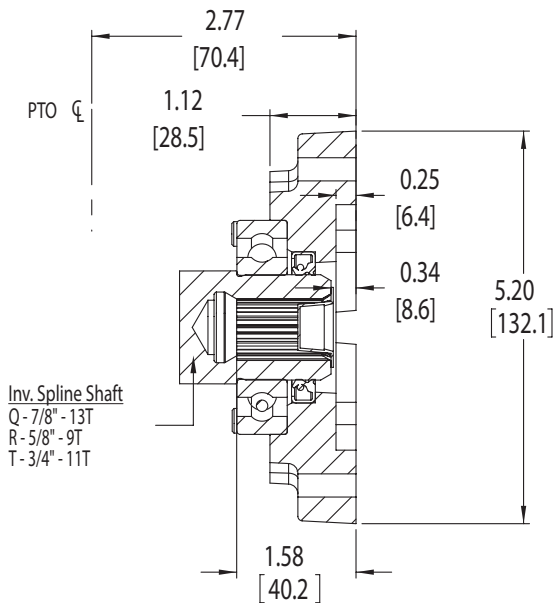
“B” OUTPUT OPTION – 1¼" ROUND KEYED SHAFT



“Q” OUTPUT OPTION – 7/8" – 13T

“R” OUTPUT OPTION – 5/8" – 9T

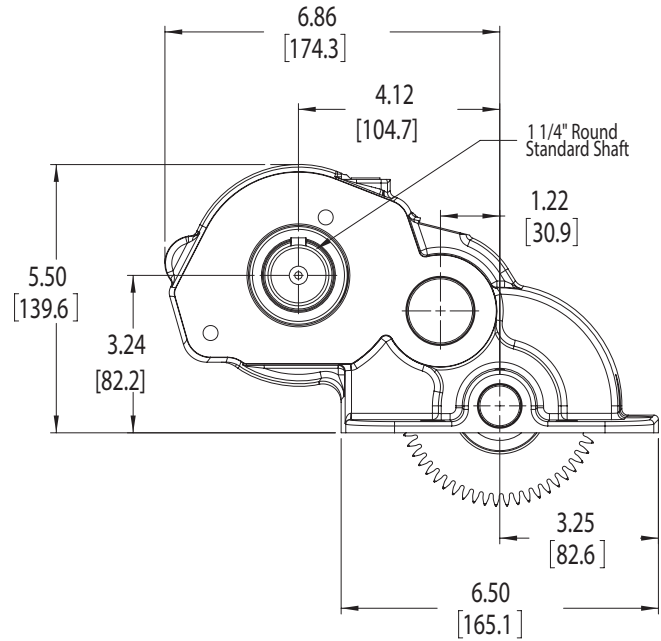
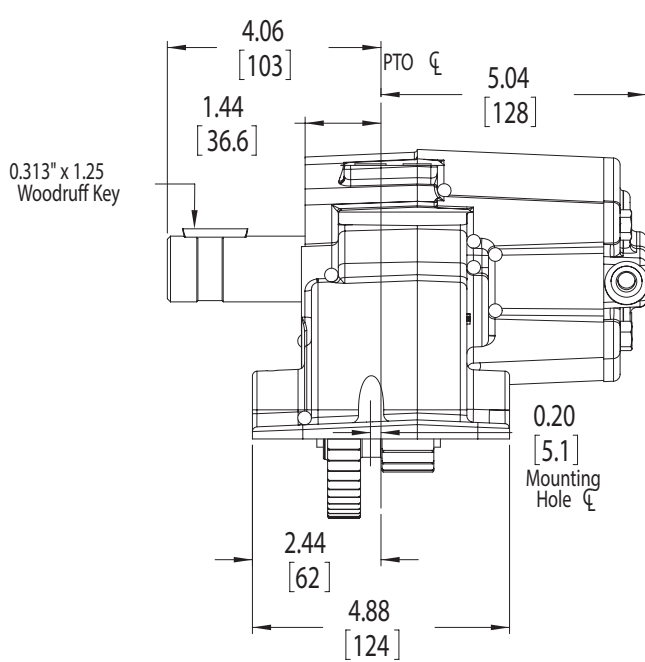
“T” OUTPUT OPTION – 3/4" – 11T



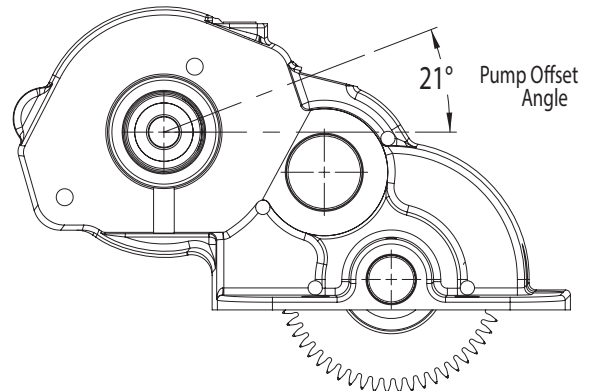
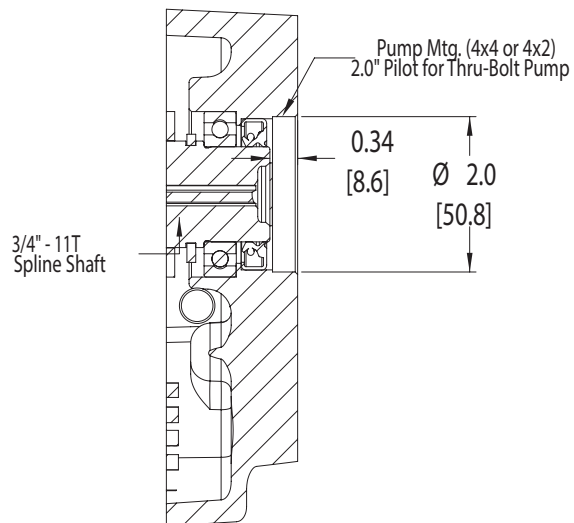
DIMENSIONS

FR64/67

“B” OUTPUT OPTION – 1 1/4" ROUND KEYED SHAFT

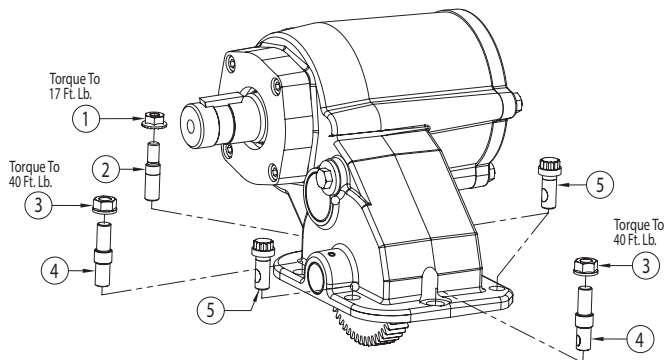


“N” OUTPUT OPTION – 3/4" – 11T



FR SERIES STUD KITS

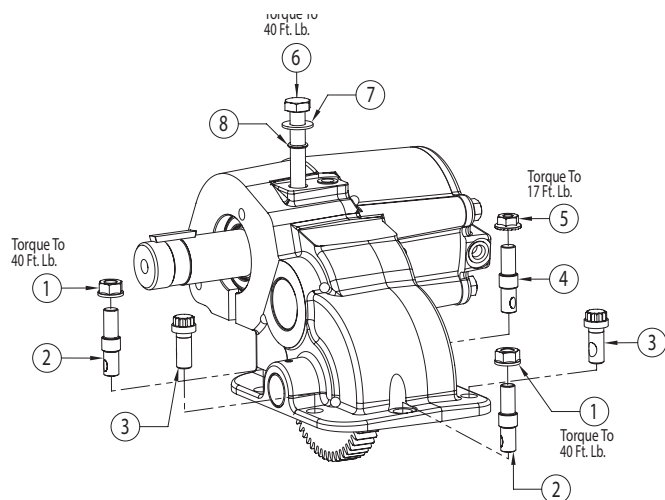
FR63 - 20TK4525



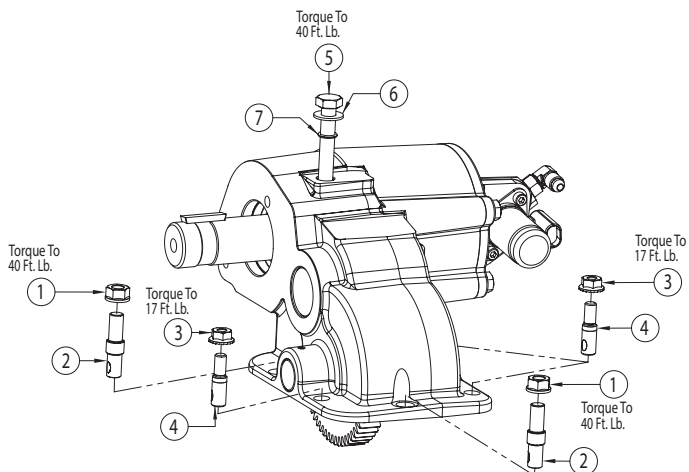
| ITEM | QTY | PART NO | DESCRIPTION |
|------|-----|----------|----------------------------|
| 1 | 1 | 22T37605 | Whiz-Lock Nut |
| 2 | 1 | 20T37952 | Step Stud |
| 3 | 2 | 22T39282 | Spirallock Nut |
| 4 | 2 | 20T37914 | Shoulder Stud |
| 5 | 3 | 19T37727 | 12-Point Capscrew (Metric) |

FR64 - 20TK4542

| ITEM | QTY | PART NO | DESCRIPTION |
|------|-----|----------|----------------------------|
| 1 | 2 | 22T39282 | Spirallock Nut |
| 2 | 2 | 21T36448 | Shoulder Stud |
| 3 | 1 | 19T37727 | 12-Point Capscrew (Metric) |
| 4 | 1 | 20T39529 | Step Stud |
| 5 | 1 | 22T37605 | Whiz-Lock Nut |
| 6 | 1 | 19T40712 | Hex Head Capscrew |
| 7 | 1 | 21T36448 | Washer |
| 8 | 1 | 12T36881 | O-Ring |

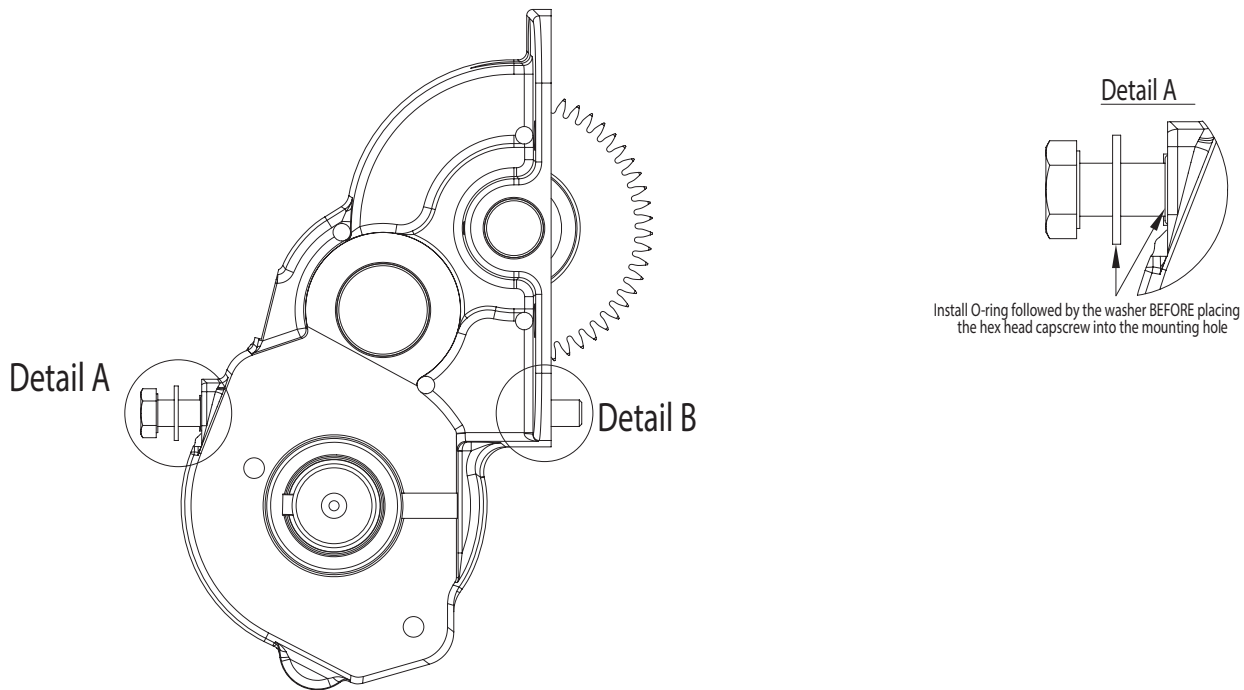


FR67 - 20TK5188



| ITEM | QTY | PART NO | DESCRIPTION |
|------|-----|----------|-------------------|
| 1 | 2 | 22T39282 | Spirallock Nut |
| 2 | 2 | 20T37914 | Shoulder Stud |
| 3 | 3 | 22T37605 | Whiz-Lock Nut |
| 4 | 3 | 20T39529 | Step Stud |
| 5 | 1 | 19T40712 | Hex Head Capscrew |
| 6 | 1 | 21T36448 | Washer |
| 7 | 1 | 12T36881 | O-Ring |

FR64/67 — THRU-BOLT INSTALLATION



The FR67 is supplied with a mounting gasket 13T42173 to replace the original Ford PTO cover gasket. This gasket replaces the need for the O-Ring shown in detail B. The O-Ring groove has been removed from the PTO housing and the gasket must be used when mounting the PTO. The gasket can be used in the FR64 units also. The gasket is located in kit 43TK5183.



SP11-05 Printed in the U.S.A
© Muncie Power Products, Inc. 2012

Muncie Power Products, Inc. Member of the Interpump Hydraulics Group
General Offices and Distributor Center • P.O. Box 548 • Muncie, IN 47308-0548
(765) 284-7721 • FAX (765) 284-6991 • E-mail info@munciepower.com
Web site <http://www.munciepower.com>
Drive Products, Exclusive Agents for Canada, ISO Certified by an Accredited Registrar